

Customer :

customer

Customer part :

customer part

Comment :

Comment

S1=9.94

S2=7.58

Tmax=417

Tp S2=456.0

PI=0.57

HI=438

Sample =756.38

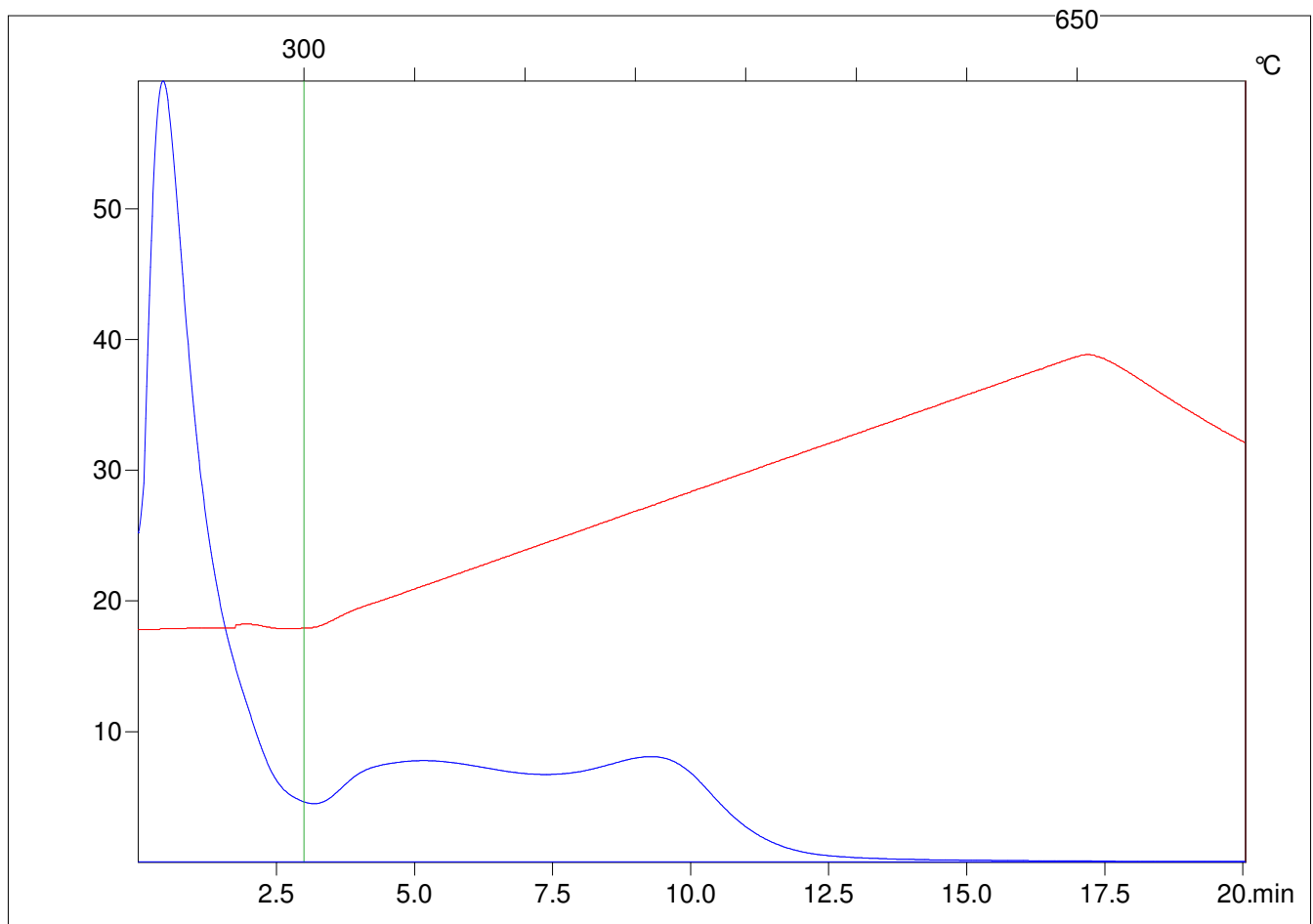
Method =Bulk Rock

Cycle=Basic

KFID(10\*9)=1550

Qty =69.5

TOC=1.73



C:\VINC\PK130315\PK011.R00 : FID pyrolysis graphic

State

Pyro Status

Oxi Status